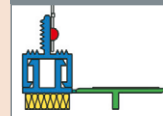




W28



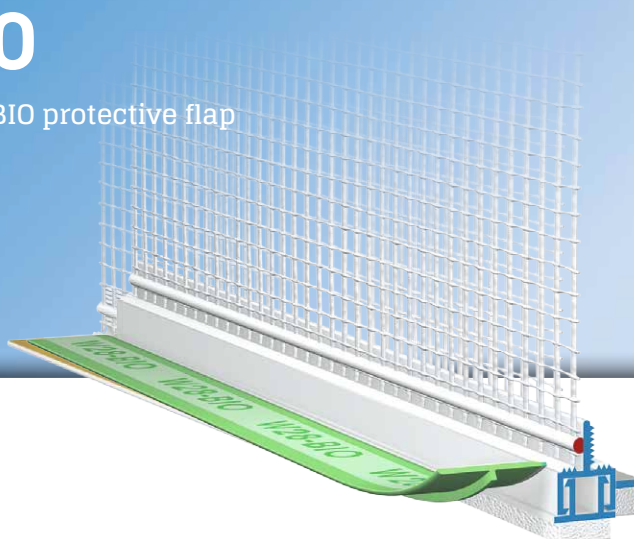
APU®

PROFILES FOR COMPOUND HEAT INSULATION SYSTEMS

Telescopic window reveal bead with mesh

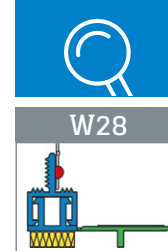
MINI-BIO

With 12.5 cm mesh and BIO protective flap

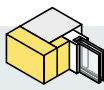
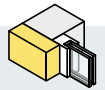



The **APU telescopic window reveal bead with mesh MINI-BIO** is used in compound heat insulation systems in accordance with the APU area of application. In front of the reveal insulation the profile is stuck flush to the structural element there and thus forms a clean and reliable termination of the plaster.

The profile comes with a self-adhesive PE foam tape, which ensures a watertight, lasting seal. The nested telescopic mechanism can absorb movements in the area around the joint. The profiles can be joined overlapping where the elements abut. There is a fabric window reveal bead welded onto the profile. Each bar has a fabric overhang on one side of 10cm in the lengthways direction. On the largely biodegradable protective flap made in the main of renewable raw materials there is a piece of self-adhesive tape in order to secure the protective film to be attached by others on site. This protects the window during the plastering work. After completion of these tasks, the protective flap is pulled off and what is created is a clean edge to the plaster.



Area of application

WINDOW POSITION	 WITHIN MASONRY	 FLUSH WITH MASONRY	 IN FRONT OF MASONRY
Sub-surface	With adhesive connection – only for surfaces suitable for being stuck to ! Test of adhesion required		
Insulating material thickness	up to 300 mm	up to 300 mm	up to 160 mm
Window size	up to 10 m ²	up to 2.6 m ²	up to 10 m ²
W28 MINI B10	■	■	■

Tested according to: ■ VDPM leaflet: Class B with adhesive connection ■ Ö-Norm B 6400-2: Class II

Design

	ITEM NO.	LENGTH	PACKAGING UNIT	WEIGHT (per PU)
--	----------	--------	----------------	-----------------

MINI-B10 telescopic window reveal bead with mesh

W28 With 12.5 cm mesh	W28-2400	2.4 m	25 bars = 60 m	9.2 kg
---------------------------------	-----------------	-------	----------------	--------

Features

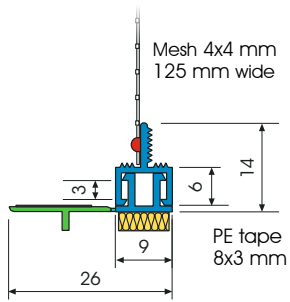
	MINI-B10 TELESCOPIC WINDOW REVEAL BEAD WITH MESH
Material	■ Rigid PVC manufactured under DIN-16941
Protective flap	■ Detachable with soft TPE connection and double-sided adhesive tape
Features	■ Telescopic mechanism
Seal	■ PE foam tape 8x3 mm
Mesh	■ Min. 160 g/m ² approved for compound heat insulation systems ■ 12.5 cm wide – MW 4x4 mm ■ Ultrasonic welded
Inspections	■ VDPM leaflet: Class B with adhesive connection ■ Ö-Norm 6400-2: Class II

Important information

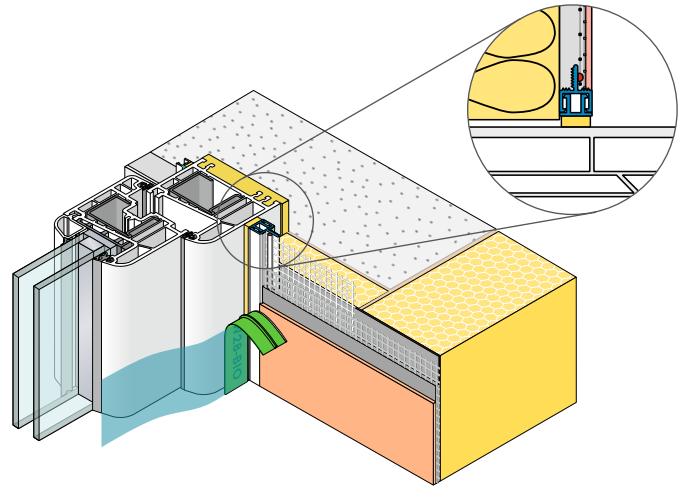
Storage	Always store profiles laid down in a dry place.
Use	Can be used only on white plastic windows.
Test of adhesion	Perform adhesion test. ▶ See general tips – APU test of adhesion
Other applications	Any applications not clearly described in the documents may be implemented only after consultation with the plaster or ETICS manufacturer.
Selection criteria	Adhere to the latest APU selection criteria. ▶ see APU selection criteria

For information on materials, areas of use, tests and correct application, please refer to our 'General Advice and Information'

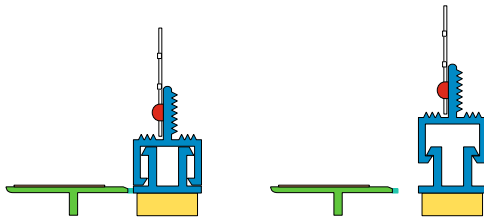
Details



Sectional drawing in mm



Application drawing



Function