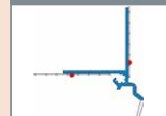




W40 - 3

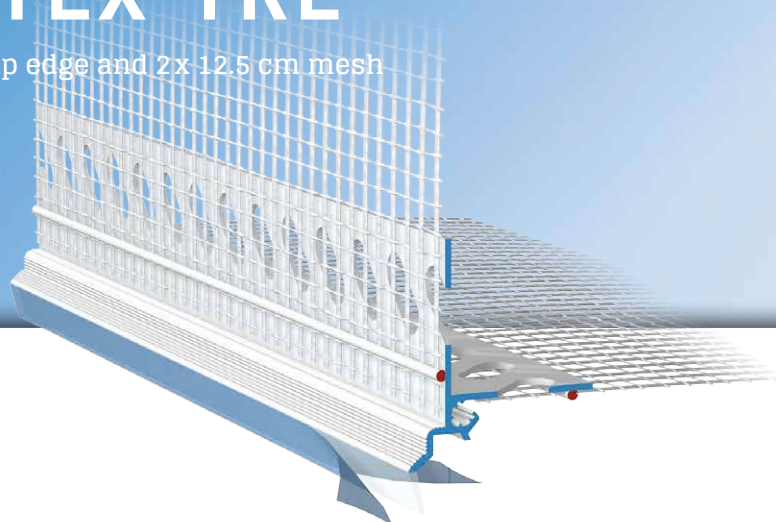
**APU**<sup>®</sup>

PROFILES FOR COMPOUND HEAT INSULATION SYSTEMS

Drip bead

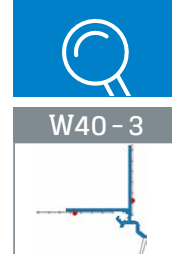
# DROP-TEX-TRE

With transparent drip edge and 2x 12.5 cm mesh



The **APU drip bead DROP-TEX-TRE** is used horizontally in compound heat insulation systems for recessed building elements, such as window and door jambs. The cranked profile contour with its transparent drip edge provides a reliable solution in respect of downward guidance of water.

The profile has two punched plaster bars. Welded onto every bar is a fabric strip. Each bar has a fabric overhang on one side of 10cm in the lengthways direction. To improve plaster take-up, the surfaces of the plaster edges are grooved.



## Design

	ITEM NO.	LENGTH	PACKAGING UNIT	WEIGHT (per PU)
--	----------	--------	----------------	-----------------

### DROP-TEX-TRE drip bead

W40-3

With transparent drip edge and 2 x 12.5 cm mesh      **W40-3-2000**      2.0 m      25 bars = 50 m      8.3 kg

## Features

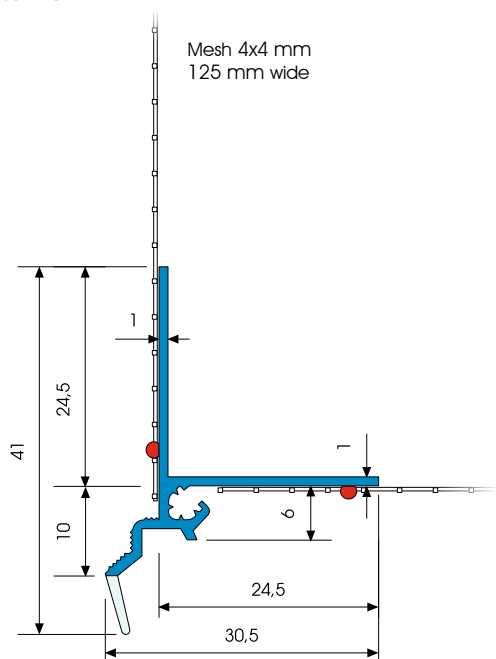
	DROP-TEX-TRE DRIP BEAD
Material	<ul style="list-style-type: none"> <li>■ Rigid PVC manufactured under DIN-16941</li> </ul>
Mesh	<ul style="list-style-type: none"> <li>■ Min. 160 g/m<sup>2</sup> approved for compound heat insulation systems</li> <li>■ 2 x 12.5 cm wide – MW 4 x 4 mm</li> <li>■ Ultrasonic welded</li> </ul>
Accessories	<ul style="list-style-type: none"> <li>■ Z13-0000 Plug connectors (1 bag)</li> </ul>

## Important information

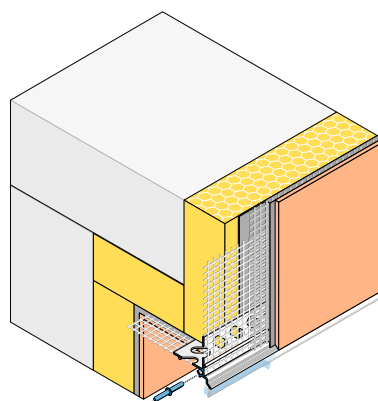
Storage	Always store profiles laid down in a dry place.
Other applications	Any applications not clearly described in the documents may be implemented only after consultation with the plaster or ETICS manufacturer.

For information on materials, areas of use, tests and correct application, please refer to our 'General Advice and Information'

## Details



Sectional drawing in mm



Application drawing