



W61-0



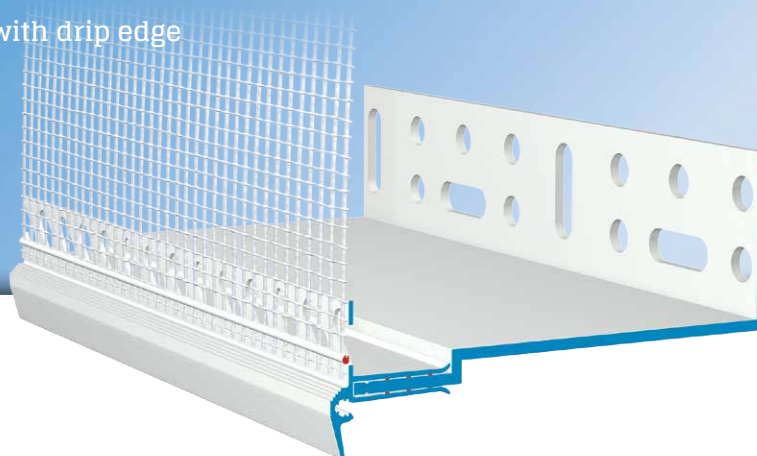
# APU®

PROFILES FOR COMPOUND HEAT INSULATION SYSTEMS

## Base rail

# SOLI-TEX-ZERO

Incl. clip-on profile, with drip edge



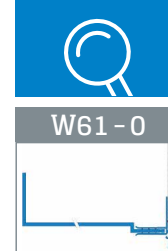
The **APU base rail SOLI-TEX-ZERO** is used in compound heat insulation systems as the bottom termination of the wall insulation.

The base rail is available in different projection lengths (50, 60, 80, 100, 120, 140 and 160 mm insulating material thickness). Where the insulating material is relatively thick, the extension rail can be used to extend the SOLI-TEX (Z63) base rail by 40 mm to 240 mm. The clip-on profile ZERO forms an exact plaster edge with drip nose.

The base rail SOLI-TEX-ZERO consists of the base rail SOLI-TEX (S61) and the clip-on profile ZERO (W62-0). The clip-on profile is clipped onto the base rail. The profile's contour forms a drip nose, ensuring that water is accurately guided away. There is a fabric window reveal bead welded onto the profile. Each bar has a fabric overhang on one side of 10cm in the lengthways direction.

The included plug connectors (Z13), butt connectors (Z61) and inner and outer corners (Z18-0) enable the profiles to be joined and fitted very precisely.

What is created after completion of the plastering work is a clean termination of the plaster.



## Design

	ITEM NO.	LENGTH	PACKAGING UNIT	WEIGHT (per PU)
--	----------	--------	----------------	-----------------

### SOLI-TEX-ZERO base rail

W61-0

Incl. W62-0 clip-on profile, with drip edge

50 mm	W61-0-2005	2.0 m	10 bars = 20 m	11.9 kg
60 mm	W61-0-2006	2.0 m	10 bars = 20 m	13.3 kg
80 mm	W61-0-2008	2.0 m	10 bars = 20 m	14.4 kg
100 mm	W61-0-2010	2.0 m	10 bars = 20 m	16.0 kg
120 mm	W61-0-2012	2.0 m	10 bars = 20 m	16.7 kg
140 mm	W61-0-2014	2.0 m	10 bars = 20 m	17.5 kg
160 mm	W61-0-2016	2.0 m	10 bars = 20 m	20.0 kg

## Features

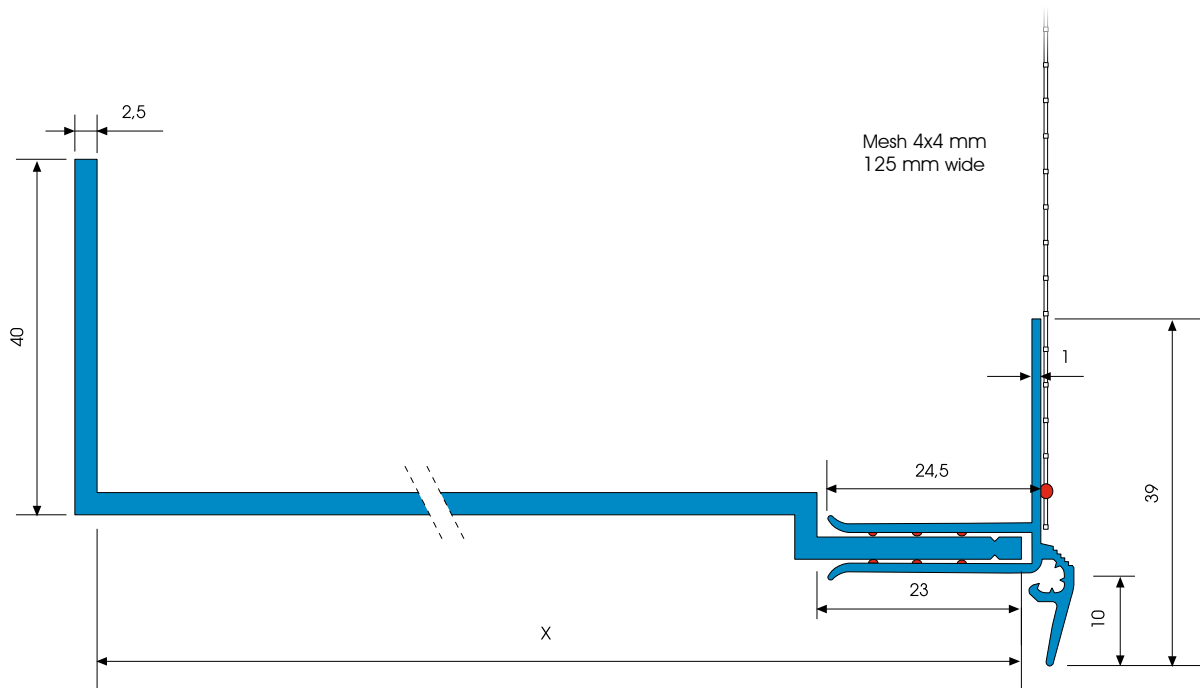
	SOLI-TEX-ZERO BASE RAIL
Material	<ul style="list-style-type: none"> <li>■ Rigid PVC manufactured under DIN 16941</li> </ul>
Features	<ul style="list-style-type: none"> <li>■ S61-20.. SOLI-TEX base rail 2.0m</li> <li>■ W62-0-2100 SOLI-TEX-ZERO clip-on profile 2.1 m</li> </ul>
Mesh	<ul style="list-style-type: none"> <li>■ Min. 160 g/m<sup>2</sup> approved for compound heat insulation systems</li> <li>■ 12.5 cm wide – MW 4x4 mm</li> <li>■ Ultrasonic welded</li> </ul>
Accessories	<ul style="list-style-type: none"> <li>■ Z61-0000 Butt connector (1-2 bars depending on projection)</li> <li>■ Z13-0000 Plug connectors (1 bag)</li> <li>■ Z18-0-1010i Internal corners (1 piece)</li> <li>■ Z18-0-1010a External corners (2 pieces)</li> </ul>
Optional accessories	<ul style="list-style-type: none"> <li>■ Z63-2004 APU SOLI-TEX extension, rail 40 mm</li> </ul>
Inspections	<ul style="list-style-type: none"> <li>■ Munich Research Institute for Heat Insulation Heat Transmission Coefficient Test Report</li> </ul>

## Important information

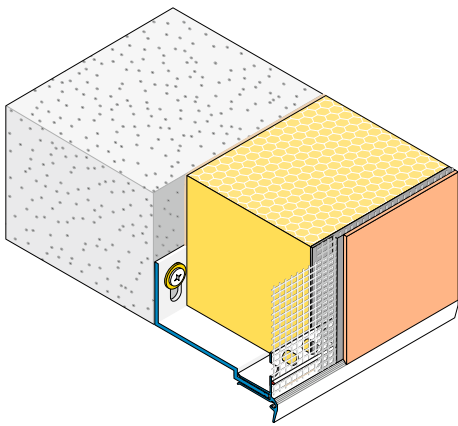
Storage	Always store profiles laid down in a dry place.
Other applications	Any applications not clearly described in the documents may be implemented only after consultation with the plaster or ETICS manufacturer.

For information on materials, areas of use, tests and correct application, please refer to our 'General Advice and Information'

## Details



Sectional drawing in mm



Application drawing