



W41



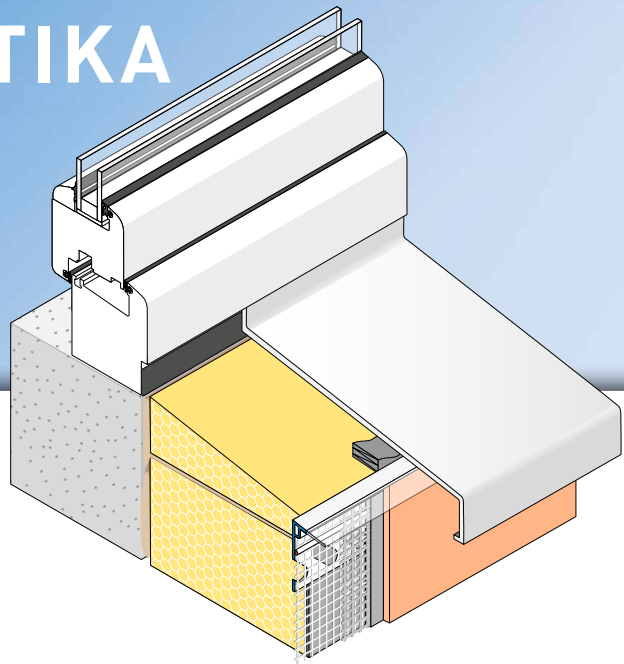
APU®

PROFILES FOR COMPOUND HEAT INSULATION SYSTEMS

Stop bead with mesh

FEBA-TEX-ATTIKA

With soft drip edge and
12.5 cm mesh



The **APU stop bead with mesh FEBA-TEX-ATTIKA** is used in compound heat insulation systems. It forms a clean plaster termination under window sills or around roof parapets.

The profile has a PVC bar with holes punched in it. There is a fabric window reveal bead welded onto the profile. Each bar has a fabric overhang on one side of 10cm in the lengthways direction. Using the plug connectors (Z14) provided, the profiles can be aligned together flush where they butt up with each other. The soft, transparent drip edge accurately guides water away.



W41



Fitting

- 1 Cut the stop bead with mesh to length using suitable trimming shears with supporting surface.
- 2 Below the insulation material edge, apply across the full area c. 15 cm of reinforcement base plaster up to the material's edge.
- 3 Position the profile flush with the edge under the window sill or around the roof parapets and, as applicable, fix using plastic nails (Z21) or plug connectors (Z14).
- 4 Embed mesh over the full area. Push fixing aid into the still damp plaster or pull it out.
- 5 Embed mesh, overlapping, up to the profile's bottom edge.
- 6 After leaving to stand for the required time, apply covering layer of plaster and draw off at the profile's edge.
- 7 Pull off the transparent drip edge's protective film.

Important information

- Any applications not clearly described in the documents may be implemented only after consultation with the plaster or ETICS manufacturer.
- After being set in place on the structural element, profiles with a mesh vane must be promptly embedded. Until then they must be protected from the weather, e.g. sun and wind.